

HISTORY OF ANONA 1872 - 1995

The story of Anona United Methodist Church, the oldest church in continuous use in Pinellas County, began with the settling of this area around the time of the Civil War. Capt. John Lowe sailed here from Key West in his schooner *Sea Drift* in 1859, and settled with his family on 80 acres of homestead land. Also with Capt. Lowe were his wife's brothers and their families (Meares), and a family friend, Capt. August R. Archer. About twenty years later another pioneer family, the Wilcoxes, came to Anona from Virginia.

In 1872, Anona Church was organized and the meetings which marked its beginnings were held in the home of Mrs. Woodard. Possibly the founders were Rev. Jimmy Kilgore and Dr. Powledge. The first minister was a circuit rider, Rev. John Wells, but William Lowe also led the meetings at times. Anona Church was originally organized as a community church serving people of all faiths.

The first rough board structure was built two years later (1874), serving as both a church and as a schoolhouse. Land was donated by Capt. Lowe, and he, his sons Jefferson and Wesley, and others, put up the building. Frank Kilgore "rived the shingles" (planed them by hand). Uncle Jimmy Kilgore, Ben and Henry Kilgore, Uncle Willie Meares (William B.), Uncle Dickey Meares (Richard) and George W. Hammock also worked on the building.

This building also served as the Anona School until 1890 when a new school was built on the Richard Meares property. This site is across from the Lutheran Church on Oakhurst Road. On cold days classes were sometimes held outdoors around a large bonfire, as the building was unheated. The building had a front porch which was used for plays and evening entertainment. A curtain stretched across the porch provided a makeshift stage while kerosene lamps and torches gave light. At least one school play drew an audience from distant Seminole, Largo, Clearwater and Dunedin. It is difficult to realize that in those days it took an entire day to go from Largo to Dunedin and back.

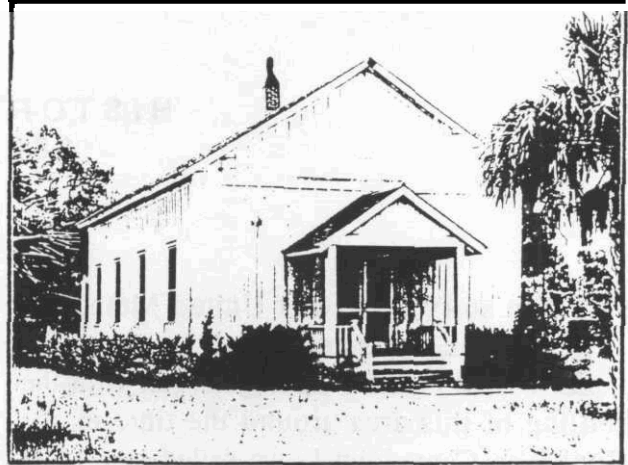
The church was served by circuit riders with Anona being part of a large circuit including Clearwater, Sylvan Abbey, Indian Pass, Largo and Dunedin. Some of the charter members of our church were Uncle Jimmy and Aunt Rhoda Kilgore and children, Uncle Tommy and Aunt Amelia Harris (who was known for her spinning and weaving), Aunt Mary Turner, Gil and Mona Powledge, Uncle Billy and Aunt Sara Meares. Uncle Billy organized the first Sunday School around 1880, and was its superintendent for many years, while Aunt Sara taught beginners and served as secretary and treasurer. Other Sunday School superintendents in the early years after Billy Meares were Mitchell Turner, Frank Kilgore, Edward Meares and Mrs. W. B. Lowe, but it is not

known what dates they served.

The name *Anona* has an interesting origin. In those days, the mail and all supplies came in by boat. Lowe's Landing (present location is behind Randolph Farms) provided the point of arrival and departure. Capt. John Lowe helped establish the Post Office there In 1883. but preferred that the name *Lowe's Landing* be changed. Mr. Hamlin, Postmaster at Cedar Key, suggested *Anona* for the sweet apple trees which were originally brought here from Key West. Jefferson Lowe was the first Postmaster, and the small community hoped that in the years to come the size of Anona would equal that of Clearwater or St. Petersburg. The Anona Post Office was discontinued, however, in 1922, and the sweet apple trees no longer exist.

At the urging of Rev. Hitchcock in 1882, the congregation began work on a new church building. The building fund ~~was~~ started with a one hundred dollar donation from Uncle Joe Rogers of Clearwater. Mrs. Miriam Wilcox and Mary Lowe were among those who drove about the countryside in a horse and buggy seeking donations. Wesley and Jeggerson Lowe felled trees growing on the property to be used for lumber for the new building. These logs were hitched to the family cow and snaked down to the bay. There they were loaded on the schooner *Emma Lowe* and shipped to Cedar Key by Capt. Lowe to be sawed into boards. When the boards were returned to the building site they were stood on end and nailed top and bottom. Cracks were battened inside and out and joists for the floor boards were supported on piers which were adzed from logs. The first pews, made from wide boards, were not comfortable and were later replaced. This building is still in use as the Youth Lounge and classroom adjacent to the Chapel of Prayer. The building was not painted nor was the ceiling installed until 1888. The paint cost twelve dollars, so the original structure, valued at ten dollars, was

given in exchange for the paint. New seats, lamps and carpets for the aisle were added. At that time the church property was valued at eight hundred dollars and the titles to the land were good.



THE FIRST CHURCH

There was a wedding in the church in 1906 and two infant baptisms in 1907, but there are few records of these and other events near the turn of the century. Mrs Ruth Wilcox remembers that her sister, Sara Hammock, and Irving Meares were married in the church sometime in the early 1900s. She also remembers walking through the sand to attend Sunday School under the dedicated leadership of Mrs. Wasley B. Lowe (Miss Mamie). However, after the death of Mrs. Lowe, the Sunday School disbanded for a while.

The congregation was very small in those years. Preaching services were held irregularly and sometimes only a few people attended. The church was still part of a large circuit in which one minister served many churches. However, in 1911, when Pinellas became a county, Anona Church continued to be a focal point for local activities.

The young people were organized into an Epworth League in 1916, and have been active in the life of the church ever since. Kathleen Plumb, of Clearwater, is credited with organizing the first Epwonth League.

In 1925, Mrs. C. E. Fischer, a school teacher, reorganized the Sunday School. Edgar McMullen of Largo was Sunday School superintendent for two years. Hugh Coil, principal of Anona School from 1947-1954, led the Sunday School from 1927-1952.

The church building was modernized in 1926, with the addition of electricity and the installation of fixtures donated by Charles Wilcox. At about that time the building was turned to face the highway and a sign, made by Harold Crist, was hung in front.

The first Bible School was organized in 1934 by Rev. O. C. Howell, but was the only one held until 1939, when Rev. J. E. Lewis held Bible School again. Rev. R. L. Sumner was pastor from 1934 until 1936 (the church was still part of a circuit) and preaching services were held on the second Sunday at 11 a. m., and on the fourth Sunday at 7:30 p. m. Prior to that time, services had been held on Sunday afternoons. Membership in the thirties was around 40-50. The Sunday School remained active under the leadership of Hugh Coil. In 1935, the church building was valued at \$1,000.

The young people, as in other periods of the church history, were quite active in the thirties and forties. In 1935, Rev. Sumner credited the young people's society with "keeping this old historical church alive." They entered into every phase of church life – Bible School, teaching Sunday School, Home Roll and nursery, in addition to their own Epworth League.

Anona was part of the Methodist Episcopal Church, South, until 1939, when the Northern and Southern groups combined to form The Methodist Church. From 1939 until 1968, our church was known as Anona Community Methodist Church.

The people enjoyed dinners *on the grounds*, and periodically held reunion dinners which all old-timers attended. At that time, there was a shed with tables on the church grounds,

where these dinners were held. Sunday School classes were also conducted in the shed and under the trees, as there were not enough classrooms. The Cemetery Association held annual cleanup days with dinner afterwards. Everyone came and helped clean **up** the cemetery and church grounds, making it a big social event.

Much work was done on the building in the forties. In 1940, the building was repainted and a new roof and a new floor (donated by Bernard Kilgore) were installed. Hugh Coil enlarged and remodeled the pulpit so that seats for the choir could be added. The older girls in Bible School made kneeling cushions, and curtains were hung around the altar rail: the boys made screens and blackboards. New stoves (for heat), new hymnals and an attic fan were added in 1942. The Pastor at that time, J. E. Lewis, stated that it was "the desire of the people to keep this fine old historic church in good repair – to honor those of other days who have worshipped at its altar."

The war years had their effect on the life of the church. In 1943, it could not hold Vacation Bible School, because of transportation problems. Instead, on each Sunday morning during July and August, Brother Lewis gave memory verses from the Bible and told a story fitting the verse. Certificates were given to those who completed the memory work. In this same year, two Sunday School rooms for the primary grades were added, **plus** pulpit chairs and a circulating oil heater, which made the sanctuary more comfortable on cold days.

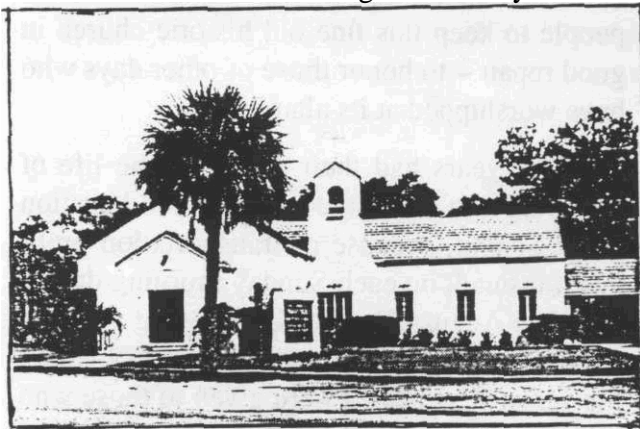
Rev. Lewis, despite ill health, served this church well for eight years, until 1946. Herbert Bowdoin, a student from Tampa, became pastor in June, 1946, and then in June, 1947, a full-time minister was appointed to Anona for the first time – Rev. J. O. Lehman.

The W.S.C.S. was organized in 1947 under the leadership of Mrs. Leatha Lehman. Meetings were held twice monthly, and by 1949 the

Society was very active, with thirty members. One of its first projects was to provide refreshments for Bible School.

The young people enjoyed presenting special programs on Sunday evenings, and as an outgrowth of these programs, regular Sunday evening services were begun. The congregation particularly enjoyed singing, so in 1938, Mrs. Ivy Hammock organized the first choir, which was made up entirely of young people. A pump organ provided accompaniment.

The 1949 membership roll consisted of "101 members and 84 tourists". An activities room, valued at \$4,000, was erected, and in 1949, the W.S.C.S. added a kitchen. The first kindergarten in the Anona and Indian Rocks area was held in this room. The small citrus community of Anona was growing rapidly, and the church felt a need for a larger sanctuary.



NEW SANCTUARY - 1951

A new sanctuary was constructed and the 1882 building was turned around to become its annex, and the activities room was moved. First services were held in the new sanctuary in November, 1951. The moving of the buildings and construction were completed without missing a single service, despite the serious illness of Rev. Lehman.

Miss Marion Lewis purchased the house and property adjacent to the church and donated it in memory of her father, Charles C. Lewis, to be used as a parsonage. In June, 1952, Rev.

Lehman retired and Rev. Ben Blackburn was appointed to Anona and moved into this parsonage. In 1953, a new Social Hall and several classrooms were constructed behind the parsonage and beside the annex.

The music program of the church continued to grow in the fifties. A new Hammond organ was purchased in 1952, replacing the old pump organ. In 1955, a children's choir was organized, with 15 or 20 children participating. Also, by this time, there were separate youth and adult choirs.

The W.S.C.S. became actively involved in a variety of projects. These included Christmas bazaars, fish fries, food and clothing drives, Care packages, and others. Funds raised were used not only for the local church program and building fund, but were also given in support of various missionary projects. For many years the W.S.C.S. provided flowers for the Sunday services.

The youth were active in M.Y.F. and in sub-district M.Y.F. programs. In 1958, they reported that they had raised \$900 in four months for the building fund with bake sales, game nights, etc. They also served at the W.S.C.S. suppers to raise money for the building fund. They attended Youth Camp at Leesburg, held Youth Weeks, and entered into other church activities.

Rev. Frank Smith became pastor in June, 1954, and served the church for three years. In 1957, he left to become a missionary to Taiwan and was replaced by Rev. DeWitt T. Farabee, Jr. Rev. Farabee and his wife, Ann, gave "devoted and faithful service" for five years of continued growth.

The Methodist Men's club was organized in 1956 and a Fisherman's Club was formed in 1957. Members of the Fisherman's Club made visits to both members and visitors. In 1958, the church began sponsorship of complete

Scout programs for both boys and girls.

In 1958, a new parsonage was constructed at 3936 Harbor Heights Drive. The old parsonage was sold and moved, as the space it occupied was badly needed for parking. A two-story education building, library, church office, pastor's study, and mens class room were added to the church building in 1960. The church was also air-conditioned that year.

A day kindergarten, "Friends of Ridgecrest", opened; the church library was funded with memorial gifts, and a monthly newsletter, *The Anon Beacon*, was begun. Missionaries in Taiwan, Cuba, and Peru, were supported. A sewing group was started. The first church bus was purchased in 1962, and a newer one in 1965.

When Rev. W. Thomas Parsons, Jr., was appointed in 1962, church membership was 663. In 1964, a long-range planning committee was formed to help plan for the needs of **our** growing church and community. Arrangements were made to purchase the White and Randolph properties, giving the church a ten-acre tract bordered by Indian Rocks and Wilcox Roads.

A building committee, elected in 1968, prepared plans for a sanctuary, fellowship hall, offices, and classrooms. The committee recommended that the existing sanctuary (1951 building) be used as a chapel, and the annex (1882 building) be divided into classrooms. The old church office, pastor's study, men's and ladies' classrooms would become youth classrooms. In October, 1968, these plans were approved and a fund-raising drive was held in which \$105,000 was pledged over a three year period. In October, 1969, the Charge Conference gave authority to build.

With a membership of 1052, Anona could no longer be considered a small country church. Rev. W. L. Joyner was appointed pastor in

June, 1969, and for the first time a full-time associate pastor was appointed. Rev. David B. Mc'Gaffic, the first associate pastor, came to Anona in June, 1969.

Ground breaking ceremonies for the proposed buildings were held February 1, 1970. Thirteen months later, on Sunday, February 21, 1971, services were begun in the building which had served as a sanctuary for twenty years. Then the congregation rose and marched to the new (present) sanctuary, led by the cross, the altar Bible, the ministers, choir, and worshipers. The old sanctuary was dedicated as a Chapel of Prayer. The day of consecration of the new sanctuary and Wesley Center was March 14, 1971, under the leadership of the pastors and the District Superintendent, Dr. Gaylon L. Howe. A Saville organ was given as a memorial in 1971.

The Anona Christian Preschool began as a mission of the church in 1972, as a day school program. It started with a Teacher/Director, two teachers, and three aides.

Anona celebrated its centennial anniversary during October, 1972. Former pastors were invited to participate in the Sunday services, and many of the women dressed up in pioneer attire. During 1972, a second parsonage was purchased for the Associate Minister.

In 1974, The Daughters of the American Revolution recognized, with a marker, our original church building as the oldest church building in continuous use in Pinellas County. The youth choir toured extensively in the U.S., and in 1974, it performed a three week singing mission to England. Anona's Monday Sewing Group benefited the church with many projects of dedicated handiwork, which included making 1200 bandages annually for the American Cancer Society.

A full-time position of Director of Music and Religious Education was added to the staff in 1976, to enhance those two program areas.

In 1977, a \$500,000 bond program was undertaken to pay the indebtedness and to complete the Wesley Center with the addition of the fellowship hall, kitchen, library, and expanded office space. This part of the Wesley Center was consecrated in 1979. By 1976, in addition to numerous choir groups, two handbell choirs were begun with Schulmerich handbells. In 1977 a Yamaha grand piano was purchased for the sanctuary. A 1978 Mission Seminar resulted in a doubling of pledges, to be used world wide and locally in Religious Community Service. Mission projects of note were the sponsorship of a Vietnamese refugee family and the Haiti Gro-Box Project. Membership in 1978 was 1450. A telephone prayer group, a singles fellowship, and a couples club were initiated, as well as evening circles for working women.

Dr. William A. Smalling joined the staff as a Christian counselor in 1980. A year later, Anona became a member of the Network of Christian Counseling Centers, Inc. In 1983, Dr. Smalling left and was replaced by Jerry Cade, who earned his Doctorate in 1992.

In 1984, Methodism celebrated its bicentennial, and Anona had a month-long observation of the event. A "Jubilee Study", drama called *Methodism in America*, slides of early Methodism in England, bumper stickers, and a music program, *Great is the Lord*, all contributed to a meaningful experience. Rev. Herb Bowdoin spoke at the Anona Sunday worship service. A local mortuary donated our original pump organ to Anona. It is on display in the narthex. Items of early Methodist artifacts were displayed, including an early Methodist camp meeting chair and a Wedgewood bust of John Wesley. The ministers arrived on horseback dressed as early cir-

cuit riders. The Sunday School classes met in the grove of trees, and many worshipers came in pioneer dress.

Our first staff Youth Director was appointed in 1980 to provide guidance and direction for the many youth activities. *Starvation for Hunger* program, weekend retreats at Moon Lake, and car washes to raise money were part of their program. The position of Youth Director was expanded to include Christian education (1983). On a trip to Reddick, Florida, the youth painted and cleaned up the property, and landscaped a church for needy families. A new bus was purchased in 1980 and was busy on many outings for the youth, seniors, singles, etc.

The choir continued to expand to include members of all ages in its programs. Equipment was upgraded to include Cathedral Chimes, a Ludwig Timpani, and in 1983, a new Baldwin 3-manual organ was purchased. A 20-piece church orchestra was also started. Choir performances in outlying areas became part of the program.

In June, 1985, ground breaking was held for an addition to the sanctuary which would include a choir room, music office and library, and remodeled restrooms. Dedication was held in November, 1986. The outdoor stone altar was dedicated in 1987 by Rev. John Hues.

A landscaping committee, formed in 1983, was instrumental in laying out the parking areas, planting trees and shrubs, and installing a sprinkling system to beautify the church's grounds. Both parsonages had major repairs to conform to Methodist standards. The Sunday School building also had major repairs and remodeling. Asbestos was removed from the old social hall and new roofing installed. In 1991, the sanctuary roofing was replaced.

The sanctuary became a more beautiful setting for worship with the installation of modern stained glass windows. New United Methodist hymnals and large type Bibles were placed in the pews. *Also*, in 1991, the chapel was painted and refurbished, and a stained glass window picturing Christ kneeling in prayer was placed behind the pulpit. A wooden cross was erected in the outside altar area.

Under the spiritual leadership of Rev. Wayne Curry (1988 - 1991) more lay people became actively involved in a great diversity of missions of the church, evidenced by the SHARE program, Greenway, Stepping Stones, Operation Desert Shield, and the tape ministry for the shut-ins. The Memorial Tree of Life and the Memorial Garden have given the congregation an opportunity for a reflective pause regarding those Christian loved ones who have preceded us to the Heavenly Kingdom.

Rev. John M. Stephenson became Senior Pastor at Anona in June, 1993. Shortly after, "Jack" earned his doctorate in October, 1993. Jack early emphasized increased spiritual growth and church attendance and having Anona serve not only its members but also the community. A study group, ***Vision 2000***, led by Jack and involving his staff, Rev. Frank Smith, youth director John Legg, and Dr. Carole Rooks (Diaconal Minister of Programs), together with lay leadership, prepared a plan setting forth directions for Anona's future - its mission and goals. ***Vision 2000*** stated the mission as: "Anona Church is an inclusive family of God, called to enrich each person as we live out our faith," This report was presented at the 1994 Charge Conference and was adopted.

Sometime during early 1995 Anona's membership reached the 2000 mark.

Increasingly, more lay persons are becoming active in reaching out to the community. Programs serving others are Food Pantry,

Meals on Wheels, SHARE, Good Samaritan (mission to migrants), Christmas International House, Stepping Stones, Hospice, blood drives, Young Life (serving the Ridgecrest Area), Adopt-a-Mile (road cleaning), UMCOR, Vision Habitat, and others. Wesley Hall has been registered by the Red Cross as a hurricane shelter. Anona continues to substantially support The Children's Home with their 5th Sunday offerings.

Programs for members include mens and womens groups, seniors trips, Bible studies, WOW (Wednesday family dinners and classes), exercise and Tai Chi classes, fruit loop Sundays, shut-in-visitation, and lawn upkeep.

Dr. Jerry Cade has expanded his counseling to include sessions for men, singles, and parenting. Music Director Randy Allen's department is stronger than ever with choirs, orchestra, and handbell choirs for all age groups.

The Fellowship Hall received a new roof in 1993. Also, the chapel continues to be used on Sundays by the Agape Group. A new parsonage for the senior pastor was purchased in 1995. The present parsonage will be used by Rev. John Hires, commencing in June, 1995.

And so, as Anona started its mission in 1872 as a community venture, the members in 1995 are reaching out to a larger community as is evidenced by the variety and number of programs.

MINISTERS WHO HAVE SERVED ANONA

1872-	Rev. Jimmy Kilgore	1928-1929	R. L. Sumner
	Rev. John Wells (a circuit rider)	1929-1930	George Wooden
	Rev. Gil Powledge (a local peacher)	1930-1931	H. A. Carlton
	William Lowe (a lay man)	1931-1934	O. C. Howell
1882-1883	Jimmy Kilgore	1934-1936	R. L. Sumner
1883-1886	H. S. Muller	1936-1938	G. W. Sellars
1886-1887	W. H. Steinmeyer	1938-1946	J. E. Lewis
Early pastoral assignments cannot be verified.		1946-1947	Herbert L. Bowdoin
Florida Annual Conference archives give the pastoral assignments which follow:		1947-1952	J. O. Lehman
1887-1888	G. W. Mitchell	1952-1954	Ben R. Blackburn
1888-1889	T. W. Dye	1954-1957	Franklin P. Smith
1889-1890	Thomas Griffith	1957-1962	DeWitt T. Farabee
1890-1893	E. H. Giles	1962-1969	W. Thomas Parsons, Jr.
1893-1894	G. W. Mitchell	1969-1975	W. L. Joyner
1894-1895	G. W. Sellars	1969-1971	David B. McGaffic, Assoc.
1895-1898	W. H. Parker	1971-1972	Richard A. Gressman, Assoc.
1898-1899	S. G. Meadows	1972-1976	Raymond F. Grossman, Assoc.
1899-1900	F. C. Stokes	1975-1979	Richard W. Rohrer
1900-1901	H. B. Frazee	1976-1978	George J. Lynch, Jr. Assoc.
1901-1903	C. A. Saunders	1978-1981	Rainer G. Richter, Assoc.
1903-1905	J. S. Brook	1979-1986	John H. Hires
1905-1906	B. T. Rape	1981-1984	Henry D. Cribb, Jr. Assoc.
1906-1907	R. J. Wells	1984-1985	Joe Hilley, Assoc.
1907-1909	D. A. Cole	1985-1988	Paul Kelly, Assoc.
1909-1911	A. B. Halto	1986-1988	John A. White.
1911-1914	A. M. Daiger	1988-1993	E. Wayne Curry
1914-1915	M. O. Williams	1988-1991	Willard J. Schied, Assistant
1915-1917	W. R. Evans	1991-1994	Thorlief Harberg, Assistant
1917-1918	James A. Hendry	1993-	Dr. John M. Stephenson
1918-1920	J. H. Daniel	1993-1995	Franklin P. Smith, Assistant
1920-1921	C. T. Howes	1994-	John Ambler, Assistant
1921-1922	S. M. Griffin	1994-	Dr. Carole A. Rooks, Diaconal Minister of Programs
	B. T. Rape, Sr. & G. H. York (assisted on circuit)	1995-	John H. Hires, Assistant
1922-1924	J. D. Majors		
1924-1926	H. E. Patridge		
1926-1927	C. T. Howes		
1927-1928	H. A. Carlton		

ANONA EXPANSION HISTORY

The following four church property layouts display the land acquisitions and the church building expansions for Anona Community Methodist Church, i.e. Anona United Methodist Church. The highlights follow:

- In 1874, the first building was erected on land donated by Captain John Lowe.
- In 1951, A new sanctuary (now the Chapel of Prayer) was built, with the original building turned 90 degrees to form the annex.
- In 1952, a home, to be used as a parsonage, and $7/8$ acre of property was donated by Ms. Marion Lewis as a memorial to her father.
- In 1964, the Randolph and White properties were purchased.
- In 1971, the present sanctuary, office and pre-school buildings were constructed.
- In 1978, the fellowship hall was built, completing the original design for the Wesley Center.
- In 1985, An addition to the sanctuary provided much needed choir rehearsal and office rooms, bridal room, etc.
- In 1991, the Education Building was completely restored, new stained glass windows were installed in the sanctuary and in the Chapel of Prayer.



CHURCH HISTORY 1872 - 1951

- 1872 Church meets at home of Mrs. Woodward
- 1874 First building erected on land donated by Captain John Lowe
Served as both Church and Public School
- 1880 First Sunday School started by Uncle Billy Meares
- 1882 First building replaced with new frame building
- 1888 Building painted and ceiling added
- 1916 Epworth League organized
- 1926 Electricity and lighting fixtures added
Building turned to face Indian Rocks Road
Church still served by circuit of itinerant ministers
- 1934 First Daily Vacation Bible School
- 1939 Church named Anona Community Methodist Church
- 1947 Women's Society of Christian Service (WSCS) organized
First full time minister
- 1948 First Church Choir organized by Ivy Hammock
- 1951 New sanctuary built (present chapel of prayer)
Old building turned to become annex to new building

Church property
from 1874-1951

Original building replaced to
become annex

New Sanctuary (1951)

Leads
Property

India Property

Randolph Property

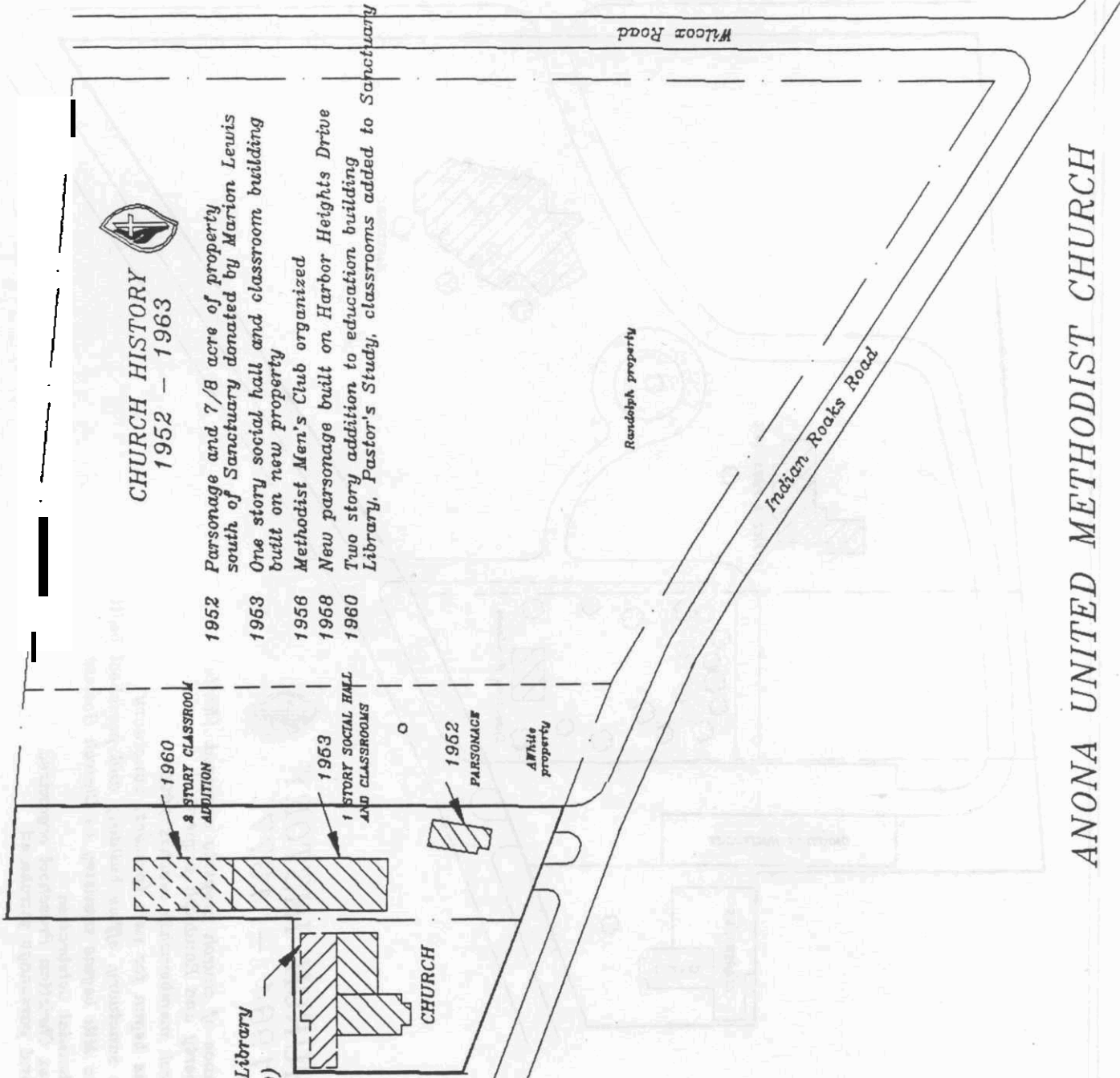
Indian Rocks Road

Future Wilcox Road



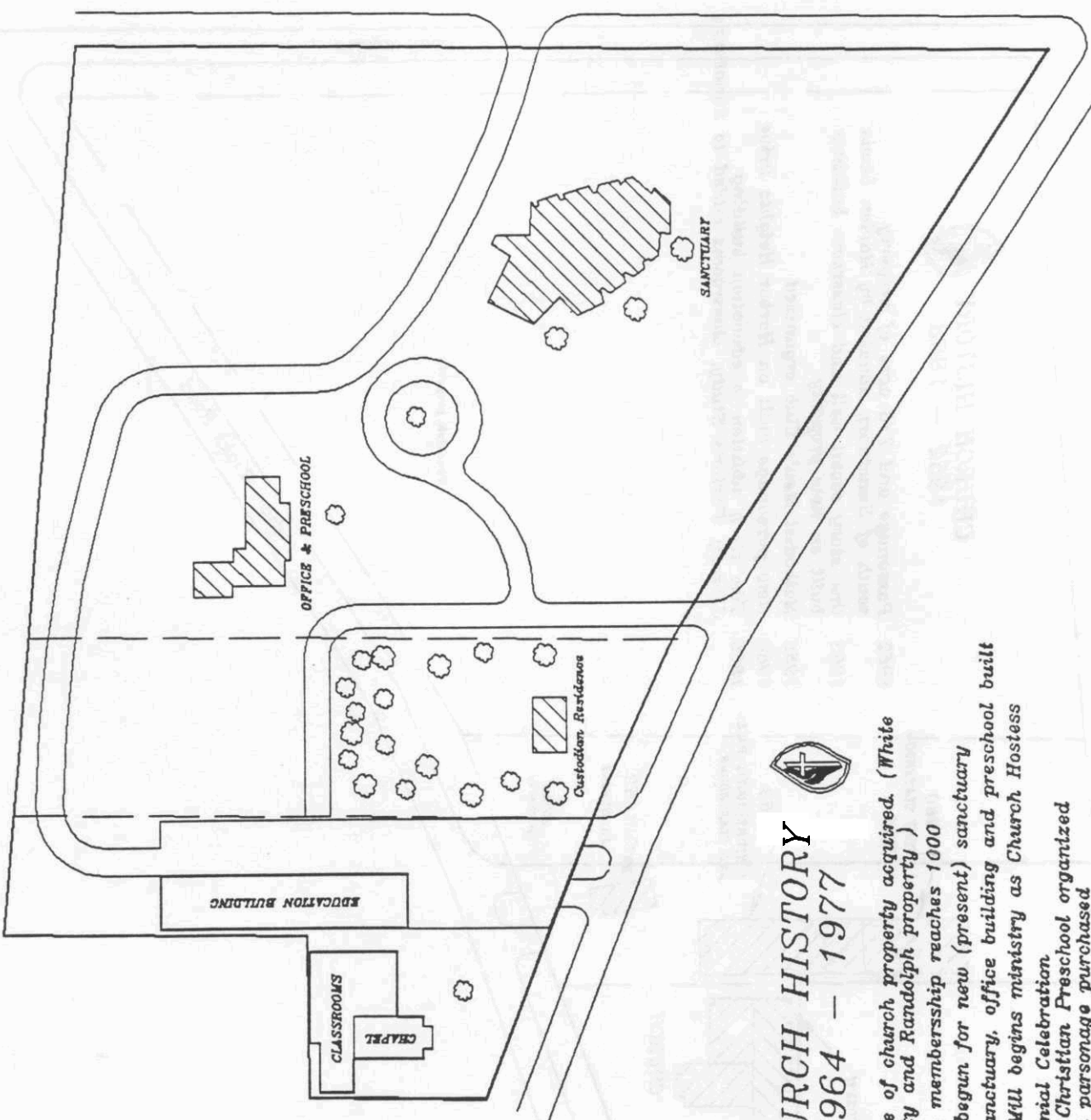
**CHURCH HISTORY
1952 - 1963**

- 1952 Parsonage and 7/8 acre of property south of Sanctuary donated by Marion Lewis
- 1953 One story social hall and classroom building built on new property
- 1956 Methodist Men's Club organized
- 1958 New parsonage built on Harbor Heights Drive
- 1960 Two story addition to education building Library, Pastor's Study, classrooms added to Sanctuary



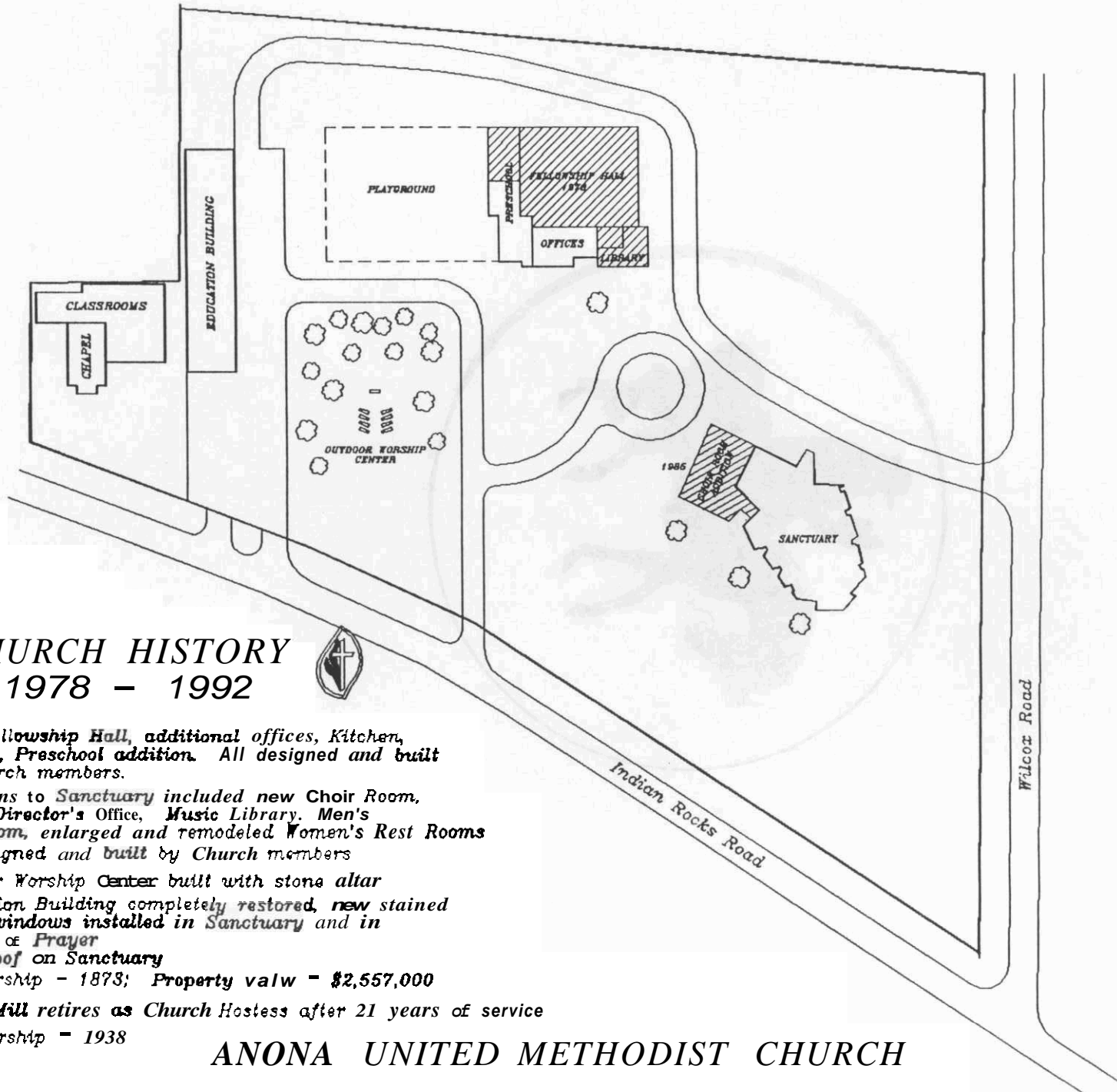
ANONA UNITED METHODIST CHURCH

ANONA UNITED METHODIST CHURCH



CHURCH HISTORY
1964 - 1977

- 1964 Balance of church property acquired. (White property and Randolph property)
- 1968 Church membership reaches 1000
- 1969 Plans begun for new (present) sanctuary
- 1971 New sanctuary, office building and preschool built
- 1971 Edna Mill begins ministry as Church Hostess
- 1972 Centennial Celebration
Anona Christian Preschool organized
Second parsonage purchased



W

CHURCH HISTORY 1978 - 1992



- 1978 *New Fellowship Hall, additional offices, Kitchen, Library, Preschool addition. All designed and built by church members.*
- 1985 *Additions to Sanctuary included new Choir Room, Music Director's Office, Music Library. Men's rest room, enlarged and remodeled Women's Rest Rooms AU designed and built by Church members*
- 1987 *Outdoor Worship Center built with stone altar*
- 1991 *Education Building completely restored, new stained glass windows installed in Sanctuary and in Chapel of Prayer
New roof on Sanctuary
Membership - 1873; Property value - \$2,557,000*
- 1992 *Edna Mill retires as Church Hostess after 21 years of service*
- 1992 *Membership - 1938*

ANONA UNITED METHODIST CHURCH